

## RELEASE WORKSHEET

RELEASE DATE

STUDENT NAME

WATERBODY NAME

Circle the icon that best represents your observations.



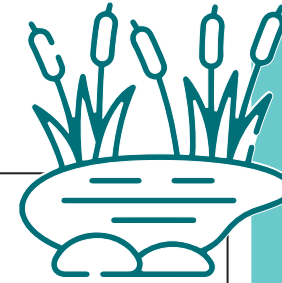
WEATHER



Fish in Schools



## Water Quality Testing



TEMPERATURE

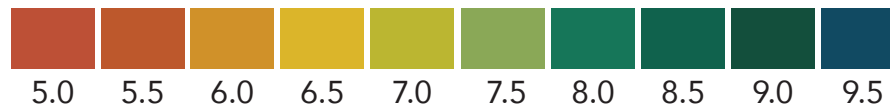
$\frac{\text{°C}}{\text{Waterbody}} - \frac{\text{°C}}{\text{Bucket}} = \frac{\text{°C}}{\text{Difference}}$

**Is there less than a 2° C difference in water temperature?**

☐ YES—OK to release      ☐ NO—Acclimatize\* fish before releasing

**\*Adjust fish to their new environment to minimize stress.**

pH LEVEL



DISOLVED OXYGEN



TURBIDITY



## SUITABLE TROUT HABITAT



WATER TEMPERATURE  
BETWEEN 0°-21°C



PH BETWEEN 5.5-9



OXYGEN LEVELS  
BETWEEN 4-8 PPM



CLEAR TO MODERATE  
TURBIDITY



## Fish Release Checklist

**Have habitat conditions been met?**

- ☐ Space to swim
- ☐ Food (aquatic invertebrates)
- ☐ Shelter (rocks & logs/plants)

Water Quality

- ☐ Cool (temperature)
- ☐ Clear (turbidity)
- ☐ pH in range
- ☐ Oxygenated

**Can fish be released into the waterbody?**

☐ YES

☐ NO



# Impacts to Fish Habitat

**1** How might weather impact the fish or the water-body?

---

---

---

**2** What might increase the amount of oxygen in the water?

---

---

---

**3** Can you think of what might impact water's turbidity?

---

---

---

**4** How could we improve this habitat for fish?

---

---

---



What do you think will happen to the fish after they are released?

Home Sweet Home!